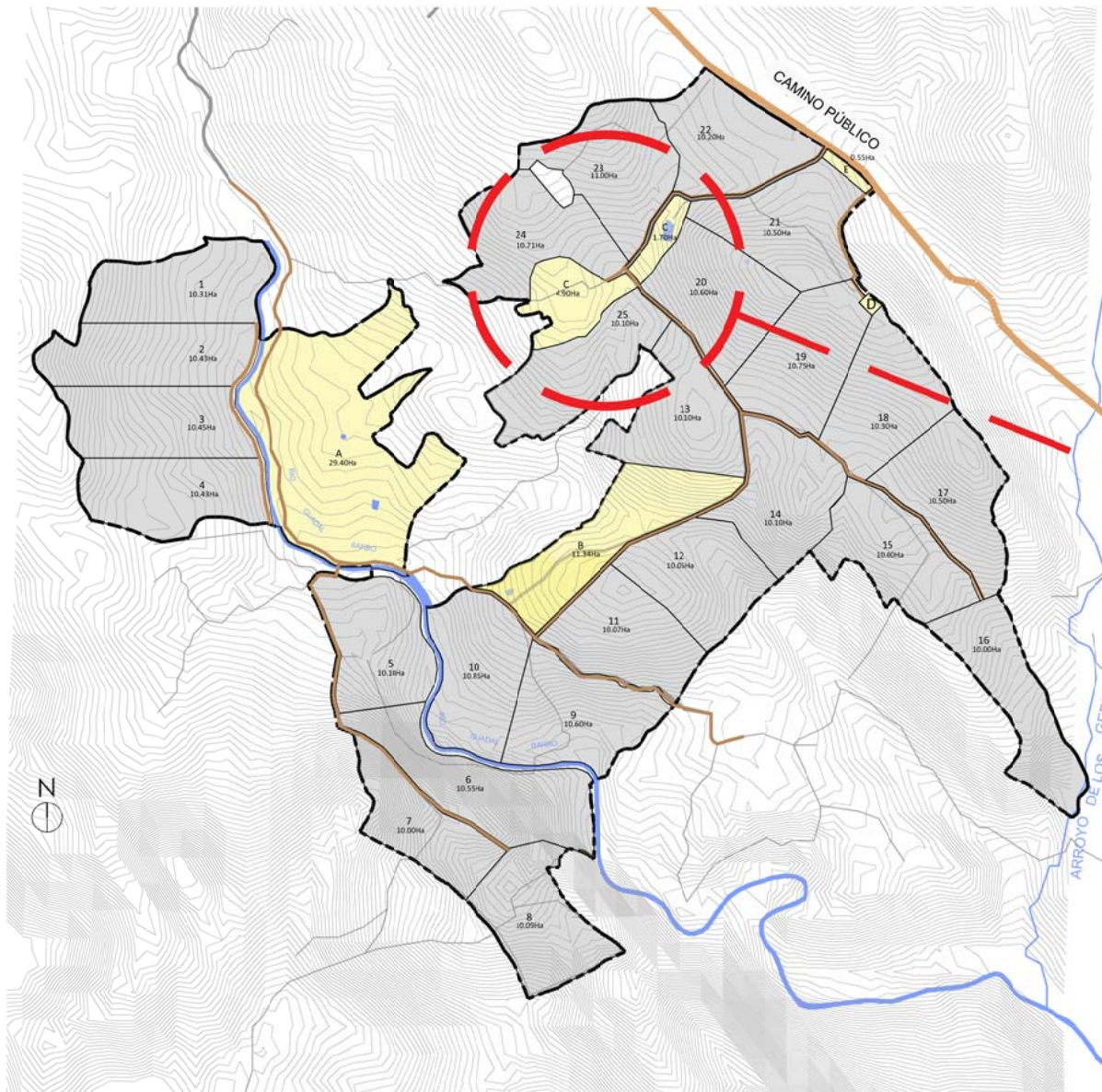


PROJECT
- ECO-HOTEL LA BASILICA -



masterplan La Basílica s:1/5000



eco-hotel plot

P R O J E C T
- E C O - H O T E L L A B A S I L I C A -



Location of eco-hotel and starlight lodges

PROJECT
- ECO-HOTEL LABASILICA -



THE PROJECT

The ECO-HOTEL La Basílica is located in a unique place, in the heart of a pasture in Los Pedroches Valley. The complex is made up of several buildings integrated into nature::

- Eco-hotel: building that houses the reception, 12 rooms, 3 suites and common lounges.
- Restaurant-cafeteria (includes a porch with views)
- Pool area (rainwater collection) and solarium
- 20 starlight lodges
- 15 overlaid locations

BUILDING	BUILT AREA
ECO-HOTEL	805,00 m2
RESTAURANT-CAFÉ	625,00 m2
SUITES WITH PATIO	230,00 m2
LODGES (20 units.)	700,00 m2
TOTAL	2360,00 m2

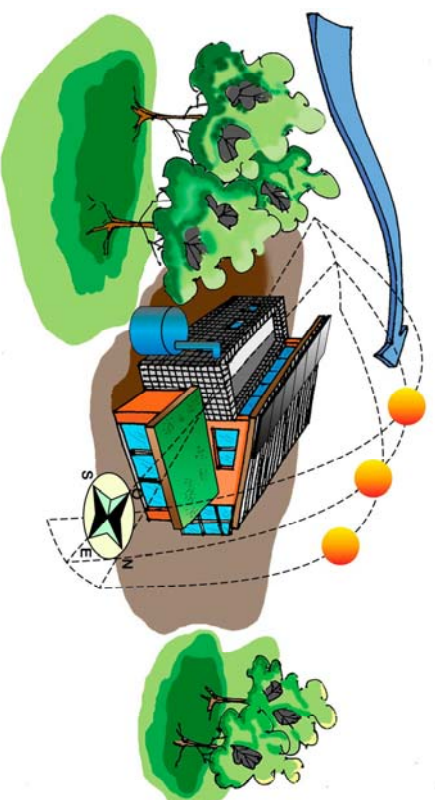
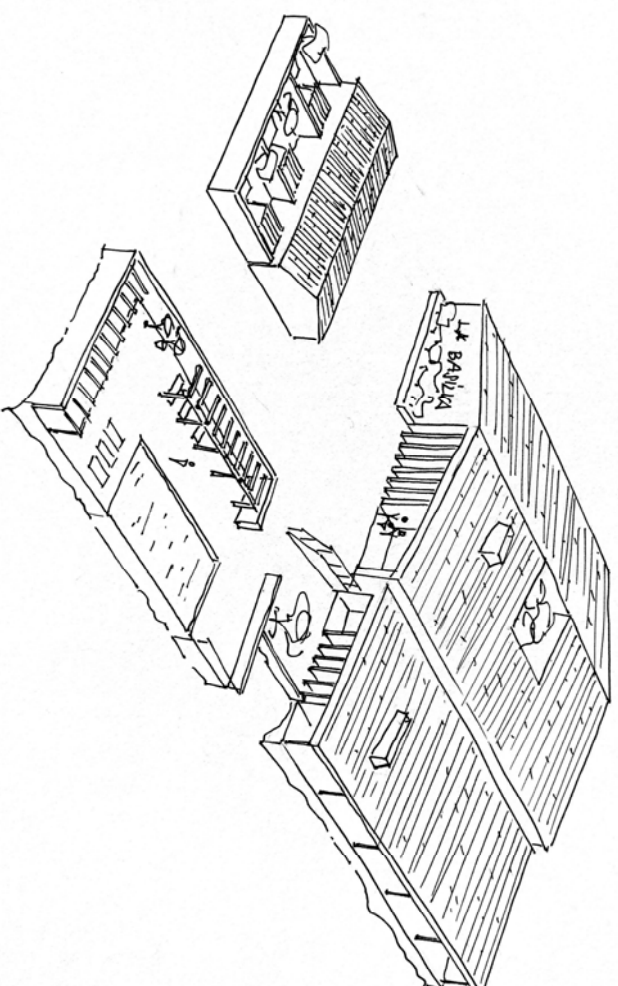
ECO-HOTEL

An eco-hotel is a type of tourist accommodation designed and operated with an ecological and sustainable approach. These establishments are committed to environmental conservation and seek to minimize their environmental impact as much as possible throughout all their operations. This includes aspects such as hotel construction and design, natural resource management, biodiversity conservation, energy efficiency, waste management and the promotion of environmentally friendly practices..

BIOCLIMATIC

Bioclimatic architecture is an architectural design approach that seeks to maximize interior comfort and minimize energy consumption by using the natural resources available in the environment.

The principles of bioclimatic architecture are based on the intelligent use of passive elements, such as the orientation of the building, the distribution of spaces, the design of windows and the selection of construction materials.



TRADITIONAL MATERIALS

The project seeks to create buildings that are harmonious with their environment, durable and sustainable, evoking a feeling of roots and connection with history and the surrounding landscape. For this, the use of traditional materials such as stone, tile or wood is proposed.

The architectural style of the buildings will be respectful of the tradition of the area, but at the same time with a contemporary approach.

NATIVE PLANT SPECIES

Constructions in this style usually favor sustainability and energy efficiency, using local and renewable materials. Wood, stone and tile are key elements, both for their durability and their timeless aesthetics.

Likewise, native plant species will be used for the landscaping of the complex. Rusticity and the need for little irrigation will prevail when choosing them.

